

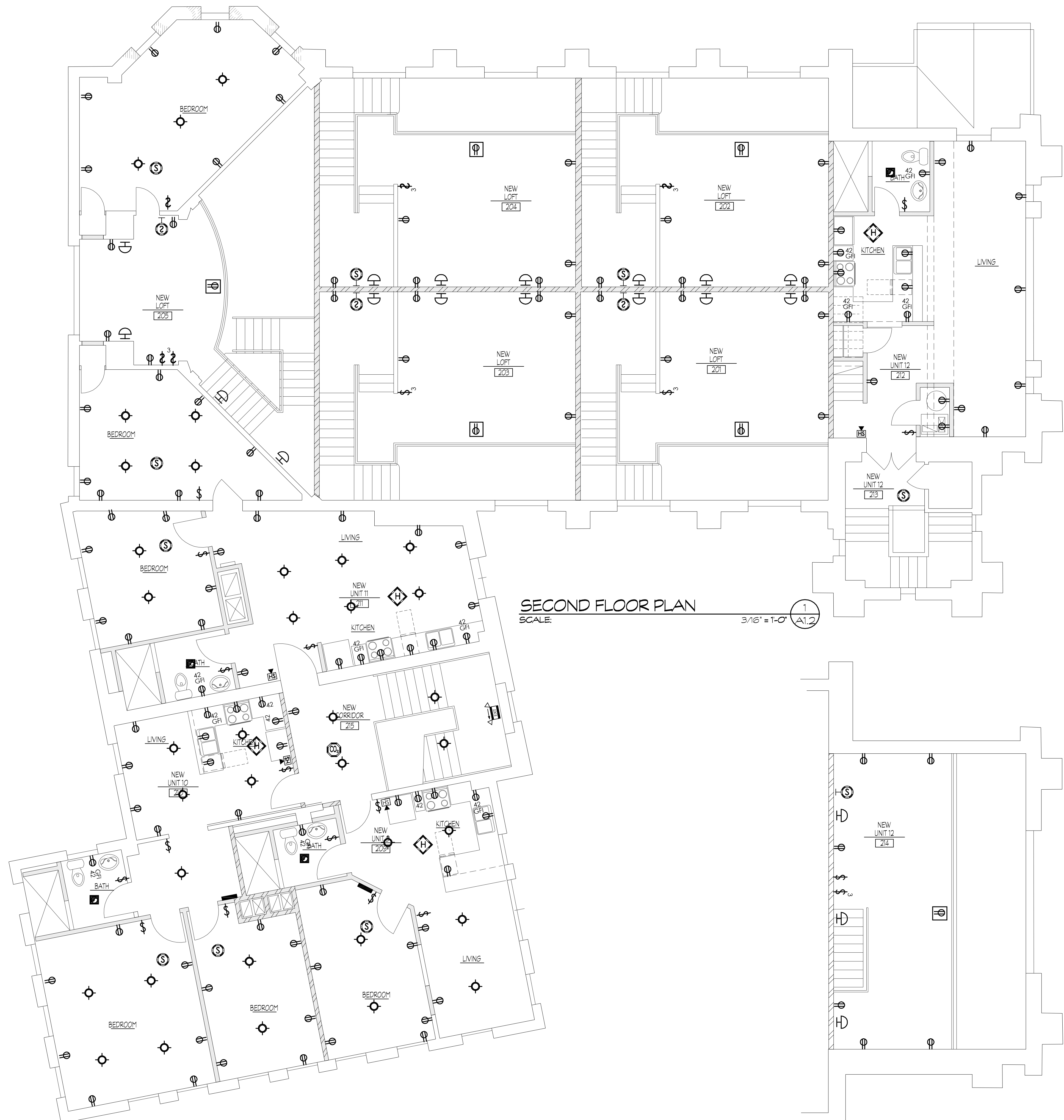
FIRE ALARM SYSTEM	
SYMBOL	DESCRIPTION
	SMOKE DETECTOR
	DUCT MOUNTED SMOKE DETECTOR
	SMOKE AND CARBON MONOXIDE COMBO DETECTOR
	HEAT DETECTOR
	MANUAL PULL STATION
	AUDIBLE/ VISUAL NOTIFICATION APPLIANCE
	VISUAL NOTIFICATION APPLIANCE
	AUDIBLE NOTIFICATION APPLIANCE
	ADJACENT LABEL INDICATES TYPE OF PANEL FAAP = FIRE ALARM ANNUNCIATOR PANEL FACP = FIRE ALARM CONTROL PANEL
	VCCP = VOICE COMMUNICATION CONTROL PANEL
	VCCC = VOICE COMMUNICATION COMMAND CENTER

LIGHTING	
SYMBOL	DESCRIPTION
	SINGLE POLE SWITCH
	THREE WAY SWITCH
	FOUR WAY SWITCH
	WALL MOUNTED OCCUPANCY SENSOR SWITCH
	INDICATES MULTI-LEVEL SWITCHING
	LAY-IN LUMINAIRE (DESIGNATION REFERS TO LUMINAIRE SCHEDULE)
	SURFACE MOUNTED LUMINAIRE (DESIGNATION REFERS TO LUMINAIRE SCHEDULE)
	EMERGENCY NIGHT LUMINAIRE (DESIGNATION REFERS TO LUMINAIRE SCHEDULE)
	STRIP LUMINAIRE (DESIGNATION REFERS TO LUMINAIRE SCHEDULE)
	PORCELAIN SURFACE MOUNTED LUMINAIRE (DESIGNATION REFERS TO LUMINAIRE SCHEDULE)
	RECESSED LUMINAIRE (DESIGNATION REFERS TO LUMINAIRE SCHEDULE)
	WALL SCONCE - INTERIOR (DESIGNATION REFERS TO LUMINAIRE SCHEDULE)
	WALL SCONCE - EXTERIOR (DESIGNATION REFERS TO LUMINAIRE SCHEDULE)
	EXHAUST FAN LIGHT COMBO
	TRACKLIGHT (DESIGNATION REFERS TO LUMINAIRE SCHEDULE)
	CEILING MOUNTED PADDLE FAN W/ ILLUMINATE (DESIGNATION REFERS TO LUMINAIRE SCHEDULE)
	CEILING MOUNTED/PENDANT CHANDELIER (DESIGNATION REFERS TO LUMINAIRE SCHEDULE)
	WALL MOUNTED INTERIOR EMERGENCY LIGHT W/ (1HR) ONE HOUR BATTERY BACK-UP POWER SOURCE
	WALL MOUNTED INTERIOR EMERGENCY LIGHT W/ (1HR) ONE HOUR BATTERY BACK-UP POWER SOURCE
	CEILING MOUNTED ILLUMINATED EXIT SIGN, RED/ WHITE PW EMERGENCY LIGHT, ONE HOUR BATTERY BACK-UP, WITH OR WITHOUT ARROW INDICATING EVACUATION ROUTE
	CEILING MOUNTED ILLUMINATED EXIT SIGN, RED/ WHITE PW EMERGENCY LIGHT, ONE HOUR BATTERY BACK-UP, WITH OR WITHOUT ARROW INDICATING EVACUATION ROUTE W/ EMERGENCY LIGHT
	WALL MOUNTED EXTERIOR EMERGENCY LIGHT W/ (1HR) ONE HOUR BATTERY BACK-UP POWER SOURCE

MISCELLANEOUS	
SYMBOL	DESCRIPTION
	ADJACENT TOP NUMBER INDICATES MOUNTING HEIGHT AT TOP OF DEVICE IN INCHES ABOVE FINISH FLOOR
	ADJACENT BOTTOM LABEL INDICATES BRANCH CIRCUIT CONNECTION FROM PANEL (L1, CIRCUIT 2 TO FUTURE(S) OR DEVICE(S).

POWER	
SYMBOL	DESCRIPTION
	DUPLEX RECEPTACLE (DESIGNATION INDICATES MOUNTING HEIGHT AFF)
	RECEPTACLE ON DEDICATED CIRCUIT (DESIGNATION INDICATES MOUNTING HT. AFF)
	DOUBLE DUPLEX RECEPTACLE (DESIGNATION INDICATES MOUNTING HEIGHT AFF)
	SPECIAL PURPOSE RECEPTACLE SUBSCRIPT INDICATES TYPE
	POINT OF CONNECTION
	COMMUNICATION/ POWER POLE
	JUNCTION BOX
	MOTOR CONNECTION, DESIGNATION REFERS TO ELECTRIC EQUIPMENT AND CONTROL SCHEDULE
	MANUAL MOTOR STARTER OR MOTOR RATED SWITCH
	NON-FUSED DISCONNECT SWITCH, DESIGNATION REFERS TO ELECTRIC EQUIPMENT AND CONTROL SCHEDULE
	FUSED DISCONNECT SWITCH, DESIGNATION REFERS TO ELECTRIC EQUIPMENT AND CONTROL SCHEDULE
	MAGNETIC MOTOR STARTER, DESIGNATION REFERS TO ELECTRIC EQUIPMENT AND CONTROL SCHEDULE
	COMBINATION MAGNETIC MOTOR STARTER AND DISCONNECT SWITCH, DESIGNATION REFERS TO ELECTRIC EQUIPMENT AND CONTROL SCHEDULE
	PUSHBUTTON
	EMERGENCY POWER OFF PUSHBUTTON
	PULLBOX
	ELECTRIC METER
	DROP CORD
	INSULATED GROUND
	GROUND FAULT INTERRUPTER
	ARC FAULT CIRCUIT INTERRUPTER
	WEATHERPROOF

POWER DISTRIBUTION	
SYMBOL	DESCRIPTION
	EXISTING PANELBOARD
	SUB PANEL PANELBOARD, REFER TO PANELBOARD SCHEDULES
	MAIN DISTRIBUTION PANELBOARD, REFER TO PANELBOARD SCHEDULES



SECOND FLOOR PLAN  
SCALE: 3/16" = 1'-0" (A1.2)

UPPER MEZZANINE PLAN  
SCALE: 3/16" = 1'-0" (A1.2)

REVISIONS	
NO.	DESCRIPTION
1	PERMIT DOCUMENTS

**ARCHITECT**  
James A Rumsey  
5723 East River Road  
Grand Island, NY 14072  
CONTACT: James Rumsey  
PHONE: 716.447.9898

**SEAL**  
James A. Rumsey  
ARCHITECT

PROJECT NO: p033495  
DATE: 06/23/10  
DESIGNED BY: JAR  
DRAWN BY: PDS  
CHECKED BY: JAR  
VERIFY ALL LINES, ANGLES AND DIMENSIONS BY FIELD SURVEY AND MEASUREMENT.



**Creative CONSTRUCTION Structures Services**  
General Contracting, Consulting, Project, Development & Management  
210 Summer Street  
Buffalo, New York 14222  
TEL/FAX: (716) 882-1226

**3495**

**SECOND FLOOR ELECTRICAL PLAN**  
**PARKSIDE APARTMENTS**  
700 Parkside Avenue  
Buffalo, New York

DATE: 6/22/10

DRAWING NO. **E1.2**