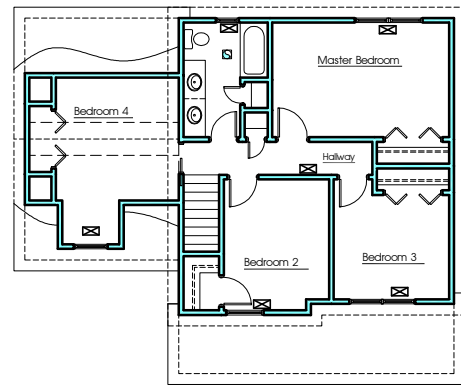


A4.1 Mechanical Plan (FIRST FLOOR PLAN)

NOTE: All Mechanical Shown on Plans are Intended to Represent Min. Design Standard and are Subject to Change on Site. All Heat Registers to Be Fed by 8" Ø Duct Work or Equal Directly From Main Truck Line (To Be Sized by Others)



A4.2 Mechanical Plan (SECOND FLOOR PLAN)

NOTE: All Mechanical Shown on Plans are Intended to Represent Min. Design Standard and are Subject to Change on Site. All Heat Registers to Be Fed by 8" Ø Duct Work or Equal Directly From Main Truck Line (To Be Sized by Others)

Supply Air Diffuser

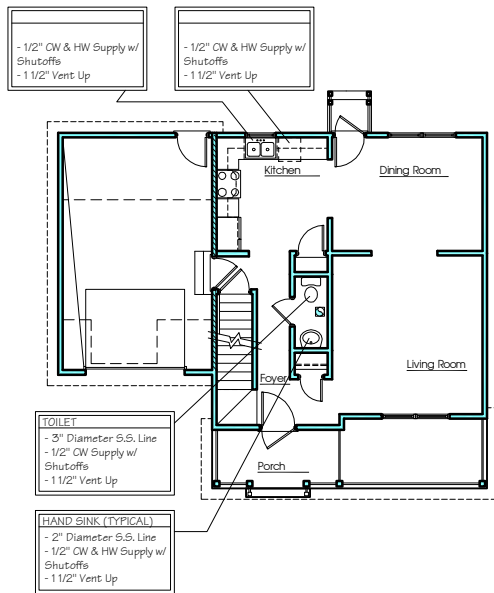
Duplex Receptacle (18" A.F.F. U.N.O.)

42" Duplex Receptacle (42" A.F.F. U.N.O.)

Ground Fault Interruptor Duplex Receptacle (42" A.F.F. U.N.O.)

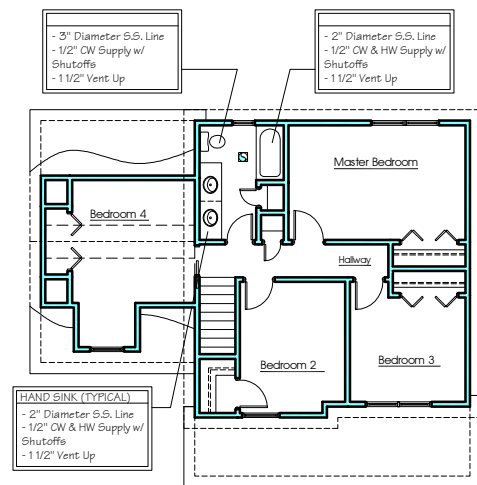
- Coordinate installation with other trades. Maintain installation to accommodate architectural drawings and finishes. Report interference for resolution by architect. Systems shall comply with applicable codes and authorities having jurisdiction; bring conflicts to the attention of the architect.
- The work of this contract includes complete heating, ventilating and air conditioning systems. All articles shown on the drawings, together with all items necessary for, or incidental to, the completion of the work shall be furnished and installed under this contract.
- Installation shall comply with all federal, state, local and service company rules, regulations or ordinances having jurisdiction over this work. These codes shall supersede information shown on these drawings.
- Provide temperature control wiring and appurtenances in accordance with NFPA 70. Visit the site and be aware of conditions which will affect the contract.
- Provide a complete and operable HVAC system for all areas. Comply with the architectural, structural, and equipment requirements. The work is generally shown on this drawing, but not limited thereto.
- Perform required cutting and patching of the existing building to install the work.
- Fabricate ductwork of galvanized steel in accordance with low pressure standards of ASHRAE and SMACNA. Less than 2" WC, air distribution. Seal transverse joints per NYSECC.
- Provide and install duct insulation in accordance with insulation manufacturer's instructions. Provide insulation with composite fire and smoke hazard ratings of 25/50 respectively. Provide vapor barrier with a continuous unbroken seal.

- Adequately insulate and vapor seal hangers and supports fastened to cold surfaces to prevent condensation.
- Insulate air conditioning supply air ductwork with 1-1/2" fiberglass, 3# density and FRK vapor sealed facing. Insulate supply air ductwork with min R=3.5 in accordance with NYSECC. Insulate outside air intake ductwork in accordance with NYSECC.
- Adjust duct/ diffusers, extractors, and air handlers to insure air distribution within 5% of the indicated volume. Provide a balance report to Architect and Owner's site representative for approval. Indicate each supply diffuser's "K" factor, velocity and air volume.
- Make initial adjustments of air handler speed to preclude excessive noisy pressure drop at ceiling diffusers. Final air balance will include at least one diffuser, with integral volume damper at 100% open.
- Do not use the air conditioning unit during construction with filters in place. Should the unit be used during construction, provide new filters at the time of Owner acceptance.
- Temperature controls: Standard factory wired system with heating and cooling, automatic changeover, night setback, seven day time clock with reserve power feature.a.b.i.i.i.i.i.i.
- All materials and equipment shall be as defined in the specification provided for this project "or equal" only allowed w/ Architects approval.



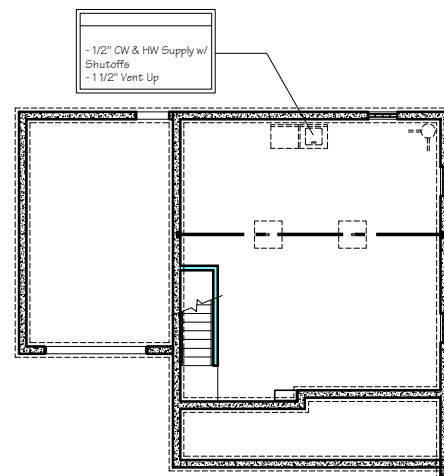
A4.3 Plumbing Plan (FIRST FLOOR PLAN)

NOTE: All Plumbing Shown on Plans are Intended to Represent Min. Design Standard and are Subject to Change on Site



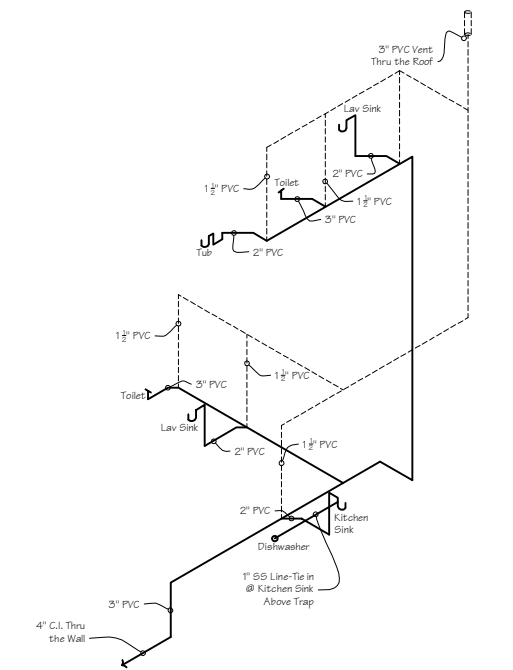
A4.4 Plumbing Plan (SECOND FLOOR PLAN)

NOTE: All Plumbing Shown on Plans are Intended to Represent Min. Design Standard and are Subject to Change on Site



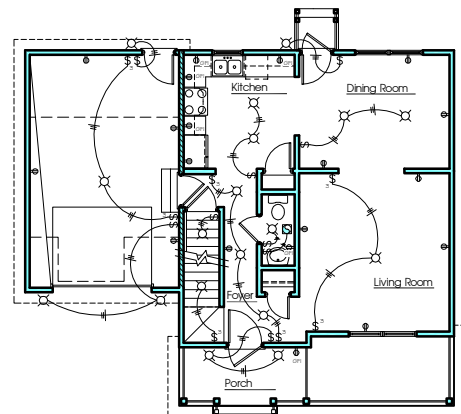
A4.5 Plumbing Plan (FOUNDATION PLAN)

NOTE: All Plumbing Shown on Plans are Intended to Represent Min. Design Standard and are Subject to Change on Site



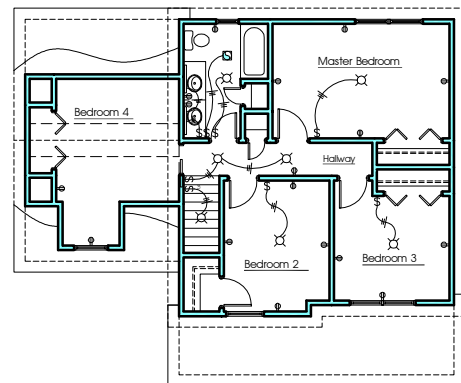
A4.6 Plumbing Isometric Diagram

N.T.S.



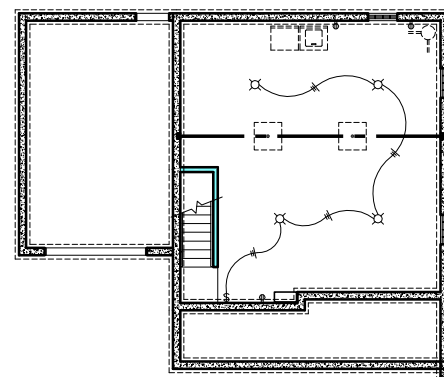
A4.7 Electrical Plan (FIRST FLOOR PLAN)

NOTE: All Electrical Shown on Plans are Intended to Represent Min. Design Standard and are Subject to Change on Site



A4.8 Electrical Plan (SECOND FLOOR PLAN)

NOTE: All Electrical Shown on Plans are Intended to Represent Min. Design Standard and are Subject to Change on Site



A4.9 Electrical Plan (FOUNDATION PLAN)

NOTE: All Electrical Shown on Plans are Intended to Represent Min. Design Standard and are Subject to Change on Site

- All electrical shall comply with the requirements of the National Electric Code and all local codes and ordinances having jurisdiction, and the power company's requirements.
- Before commencing work, the Electrical Contractor shall visit the site and notify the Owner, Tenant, and Architect of any existing conditions that will interfere with his work.
- All branch circuit wiring shall be #12 type T.W.-copper unless noted otherwise.
- All feeder cables and cable to mechanical equipment shall be type Romex copper, sized as indicated on the drawings.
- Electrical contractor shall coordinate electric service facilities and make arrangements with Power Company for service connections. All connections to Power Company's service facility shall comply with the Power Company's and local utility company's requirements.
- The Electrical contractor shall render all necessary assistance to the HVAC trade for connections of all control wiring furnished and installed by the HVAC contractor.
- All power wiring for HVAC equipment shall be by the electrical contractor. Automatic temperature control wiring shall be by the HVAC contractor.
- The drawings show diagrammatically the locations of various electrical devices, equipment and fixtures and the method of connecting and controlling them. They are not intended to show every connection detail nor all fittings required to complete the work. The electrical contractor shall provide all equipment and appurtenances for a complete and operable system.
- Refer to the Architectural and Mechanical drawings to arrange conduit routing and supports, hanging of lighting fixtures, and location or equipment. Visit the construction site to verify all existing conditions.
- Prior to starting any work, obtain approval of all equipment and material, location of all equipment and method of installation of equipment and systems from the Owner's representative.
- All materials shall be new and of top quality, free from defects, made in the U.S.A. and listed by Underwriters Laboratories, Inc. and bearing their label.

Provided As Per Written Specifications.



3284 Walden Ave
Depew, New York 140
(716)651-0381 Fax 651-02

Job Number: **09-191**

Lot B (Sarah)



Creative Structures Services
General Contracting - Consulting - Project Development & Management

1,492 Sq. Ft.

Woodlawn Avenue,
Buffalo, New York

Copyright Deansutton Architects ©2003

No.	Description	Dat

WARNING:
It is a violation of Article 1407, Section 1 of the New York State Education Law: person to alter an item, in any way, or documents, unless under the direction of a licensed Architect.

Title: **Mechanical Plan**

Drawn By: **J. Strasser**
Date: **07-13-09**
Checked: **D. Sutton**
Scale: **As Noted**
Sheet No.: **A-4**