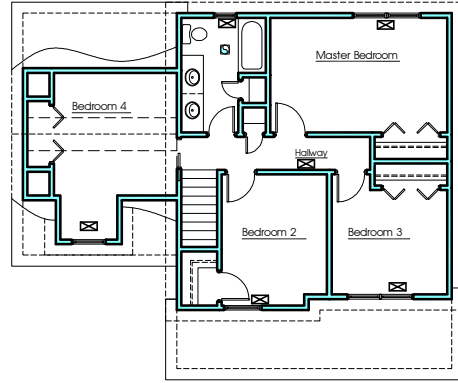


A41 Mechanical Plan (FIRST FLOOR PLAN)

NOTE: All Mechanical Shown on Plans are Intended to Represent Min. Design Standard and are Subject to Change on Site. All Heat Registers to Be Fed by 8" Duct Work or Equal Directly From Main Trunk Line (To Be Sized by Others)



A42 Mechanical Plan (SECOND FLOOR PLAN)

NOTE: All Mechanical Shown on Plans are Intended to Represent Min. Design Standard and are Subject to Change on Site. All Heat Registers to Be Fed by 8" Duct Work or Equal Directly From Main Trunk Line (To Be Sized by Others)

MECHANICAL LEGEND

Supply Air Diffuser

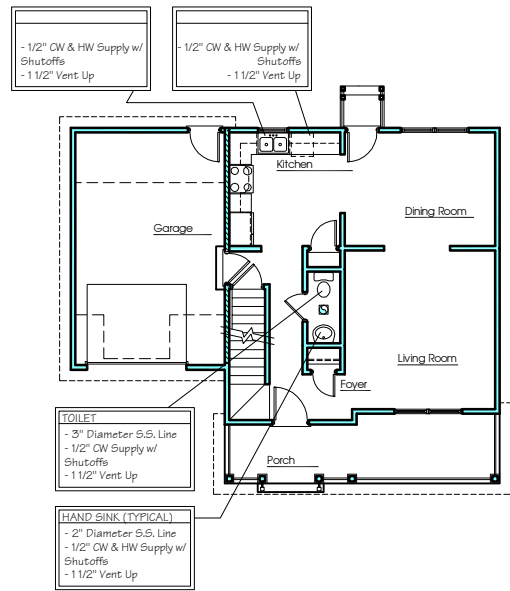
Duplex Receptacle (18" A.F.F. U.N.O.)

42" Duplex Receptacle (42" A.F.F. U.N.O.)

GFI Duplex Receptacle (42" A.F.F. U.N.O.)

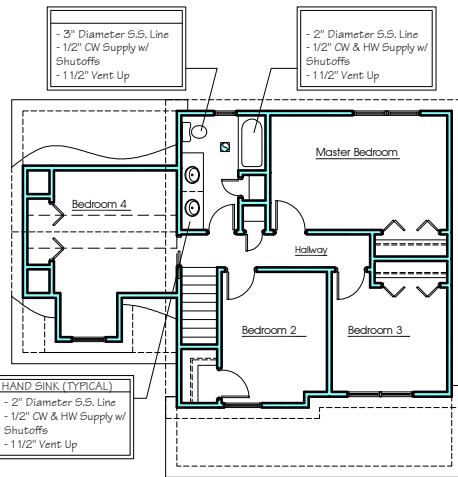
- Coordinate installation with other trades. Maintain installation to accommodate architectural drawings and finishes. Report interference for resolution by architect. Systems shall comply with applicable codes and authorities having jurisdiction; bring conflicts to the attention of the architect.
- The work of this contract includes complete heating, ventilating and air conditioning systems. All articles shown on the drawings, together with all items necessary for, or incidental to, the completion of the work shall be furnished and installed under this contract.
- Installation shall comply with all federal, state, local and service company rules, regulations or ordinances having jurisdiction over this work. These codes shall supersede information shown on these drawings.
- Provide temperature control wiring and appurtenances in accordance with NFPA 70. Visit the site and be aware of conditions which will affect the contract.
- Provide a complete and operable HVAC system for all areas. Comply with the architectural, structural, and equipment requirements. The work is generally shown on this drawing, but not limited thereto.
- Perform required cutting and patching of the existing building to install the work.
- Fabricate ductwork of galvanized steel in accordance with low pressure standards of ASHRAE and SMACNA. Less than 2" WC, air distribution. Seal transverse joints per NYSECC.
- Provide and install duct insulation in accordance with insulation manufacturer's instructions. Provide insulation with composite fire and smoke hazard ratings of 25/ 50 respectively. Provide vapor barrier with a continuous unbroken seal.

- Adequately insulate and vapor seal hangers and supports fastened to cold surfaces to prevent condensation.
- Insulate air conditioning supply air ductwork with 1- 2" fiberglass, #2 density and FRK vapor sealed facing. Insulate supply air ductwork with min R=3.5 in accordance with NYSECC. Insulate outside air intake ductwork in accordance with NYSECC.
- Adjust duct/ diffusers, extractors, and air handlers to insure air distribution within 5% of the indicated volume. Provide a balance report to Architect and Owner's site representative for approval. Indicate each supply diffuser's "K" factor, velocity and air volume.
- Make initial adjustments of air handler speed to preclude excessive noise pressure drop at ceiling diffusers. Final air balance will include at least one diffuser, with integral volume damper at 100% open.
- Do not use the air conditioning unit during construction with filters in place. Should the unit be used during construction, provide new filters at the time of Owner acceptance.
- Temperature controls: Standard factory wired system with heating and cooling, automatic changeover, night setback, seven day time clock with reserve power feature.a.b.l.i.l.i.
- All materials and equipment shall be as defined in the specification provided for this project "or equals" only allowed w/ Architect approval.



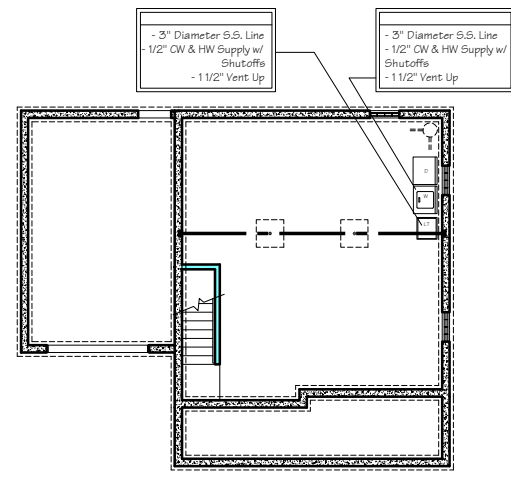
A43 Plumbing Plan (FIRST FLOOR PLAN)

NOTE: All Plumbing Shown on Plans are Intended to Represent Min. Design Standard and are Subject to Change on Site



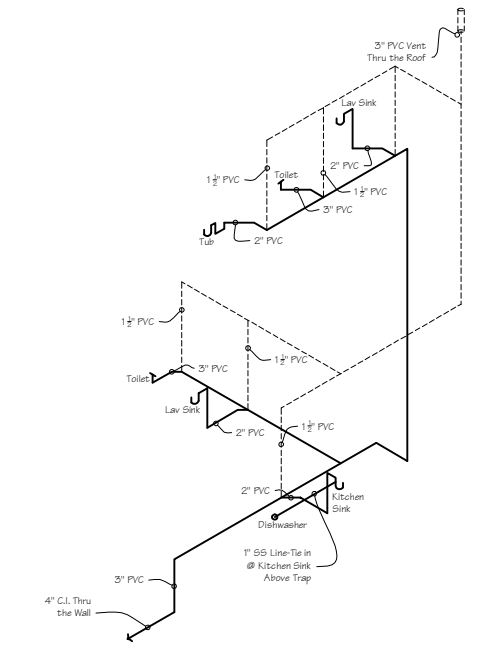
A44 Plumbing Plan (SECOND FLOOR PLAN)

NOTE: All Plumbing Shown on Plans are Intended to Represent Min. Design Standard and are Subject to Change on Site



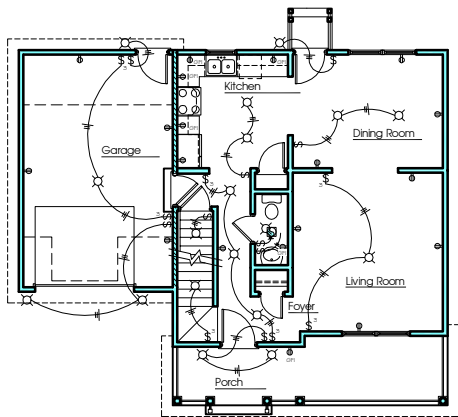
A45 Plumbing Plan (FOUNDATION PLAN)

NOTE: All Plumbing Shown on Plans are Intended to Represent Min. Design Standard and are Subject to Change on Site



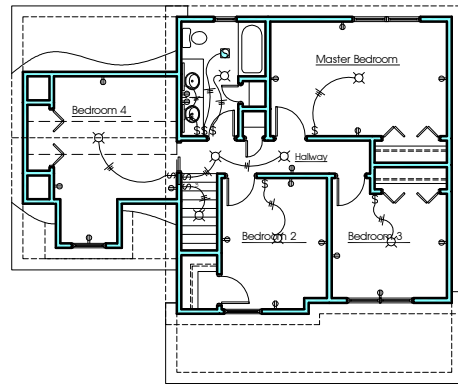
A46 Plumbing Isometric Diagram

N.T.S.



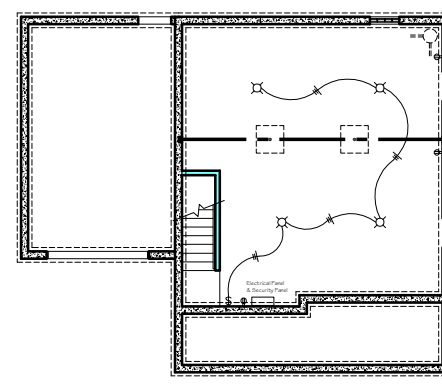
A47 Electrical Plan (FIRST FLOOR PLAN)

NOTE: All Electrical Shown on Plans are Intended to Represent Min. Design Standard and are Subject to Change on Site



A48 Electrical Plan (SECOND FLOOR PLAN)

NOTE: All Electrical Shown on Plans are Intended to Represent Min. Design Standard and are Subject to Change on Site



A49 Electrical Plan (FOUNDATION PLAN)

NOTE: All Electrical Shown on Plans are Intended to Represent Min. Design Standard and are Subject to Change on Site

Specifications.



3284 Walden Ave  
Depew, New York 1420  
(716)651-0381 Fax 651-02

Job Number:  
**09-191**

Lot A (Donna)



**Creative Structures Services**  
General Contracting - Consulting - Project Development & Management

1,492 Sq. Ft.

Woodlawn Avenue,  
Buffalo, New York

Copyright Deansutton Architects © 2003

No.	Description	Dat

**WARNING:**  
It is a violation of Article 1407, Section 1 of the New York State Education Law: person to alter an item, in any way, or document, unless under the direction of a licensed Architect.

Title:  
**Mechanical Plan**

Drawn By:  
**J. Strasser**  
Date:  
**07-13-09**  
Checked:  
**D. Sutton**  
Scale:  
**As Noted**

Sheet No.:

**A-4**