

ELEV F
SCALE: 3/16" = 1'-0" A201

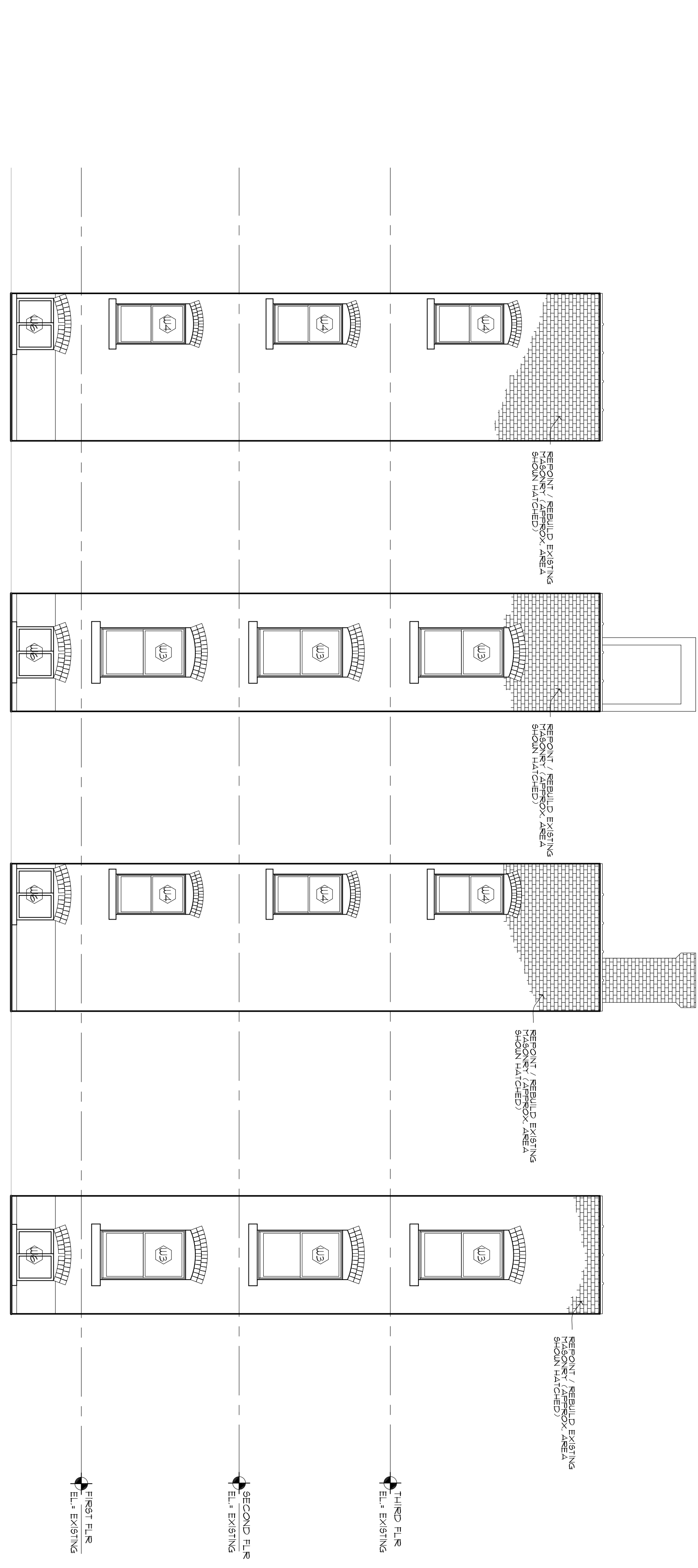
ELEV E
SCALE: 3/16" = 1'-0" A201

NORTH ELEVATION
SCALE: 3/16" = 1'-0" A201

D
SCALE: 3/16" = 1'-0" A201

GENERAL NOTES

- CONTRACTORS TO INSPECT EXISTING BRICK / MASONRY AREAS RETURN / REBUILD AREAS AS NECESSARY AND REPAIR DAMAGE TO ADJACENT AREAS NOT SHOWN ON DRAWINGS.

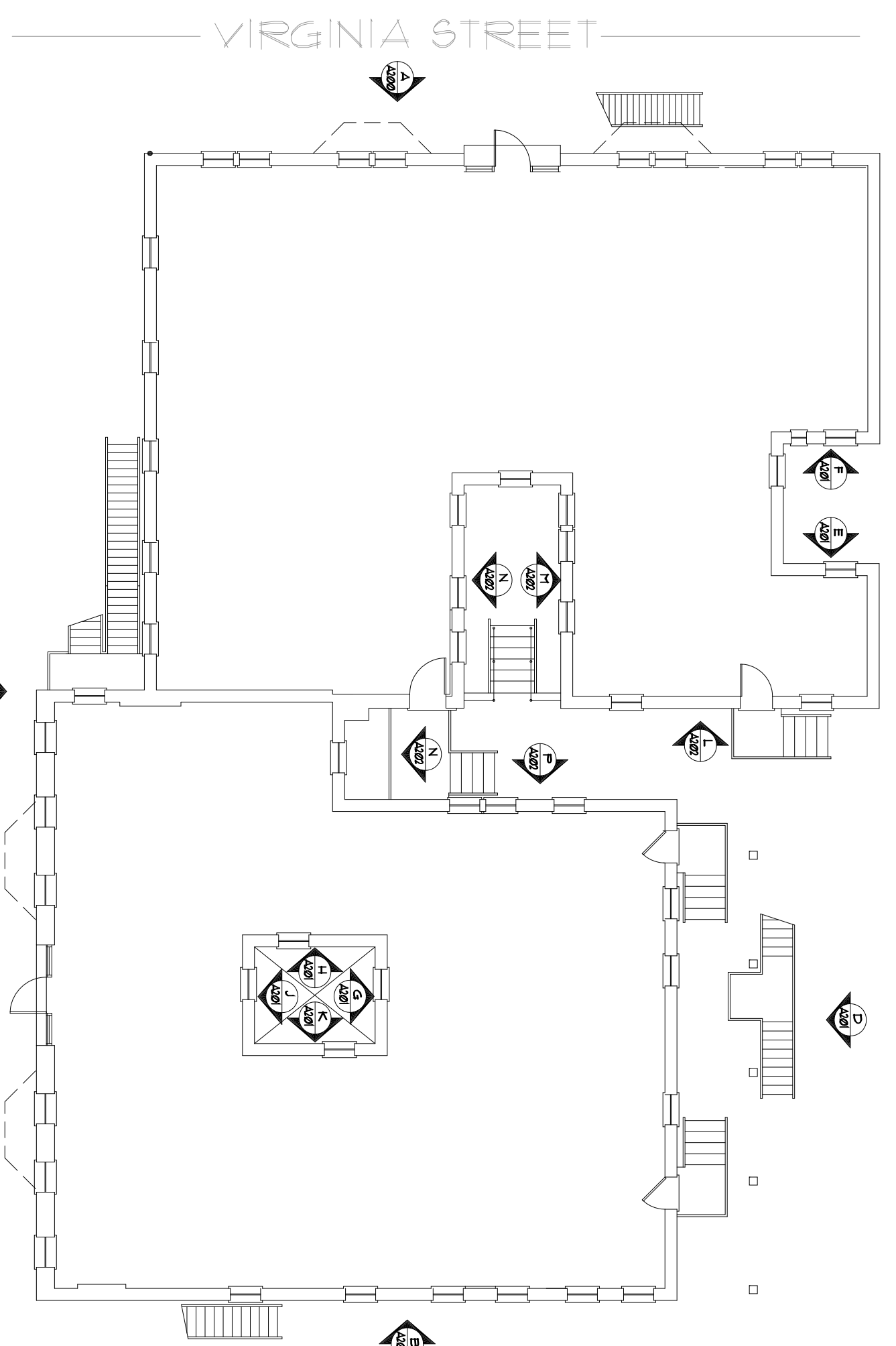


ELEV K
SCALE: 3/16" = 1'-0" A201

ELEV J
SCALE: 3/16" = 1'-0" A201

ELEV H
SCALE: 3/16" = 1'-0" A201

ELEV G
SCALE: 3/16" = 1'-0" A201



KEY PLAN

REVISIONS		
NO.	DATE	DESCRIPTION
1	6/25/09	ISSUED - BID DOCUMENTS

THIS DOCUMENT IS AN INSTRUMENT OF PROFESSIONAL SERVICE AND THE PROPERTY OF THE ARCHITECT AND ANY ALTERATION THEREOF OR UNAUTHORIZED USE OF THE DESIGN, DETAILS, SPECIFICATIONS, CONCEPTS OR IDEAS THEREIN WITHOUT THE EXPRESS WRITTEN CONSENT OF THAT FIRM IS PROHIBITED AND IS A VIOLATION OF SECTION 209 OF THE NEW YORK STATE EDUCATION LAW. THIS DOCUMENT SHALL NOT BE USED FOR ANY OTHER PROJECT.

James A. Rumsey
Architect
5729 East River Road
Buffalo, NY 14222
(716) 447-2988

PROJECT NO. ps3405
DATE: 06.15.09
DESIGNED BY: ps
DRAWN BY: pds
CHECKED BY: ps
VERIFIED ALL LINE ANGLES AND DIMENSIONS BY: REVISIONS AND DIMENSIONS BY:



Creative Structures Services
210 Summer Street
Buffalo, New York 14222
TEL/FAX (716) 858-1228

3405

ELEVATIONS
VIRGINIA MANOR
RENOVATION
250 VIRGINIA STREET / 74 TENTH STREET
CITY OF BUFFALO, COUNTY OF ERIE, STATE OF NEW YORK

DATE: 06.12.09

DRAWING NO. **A201**